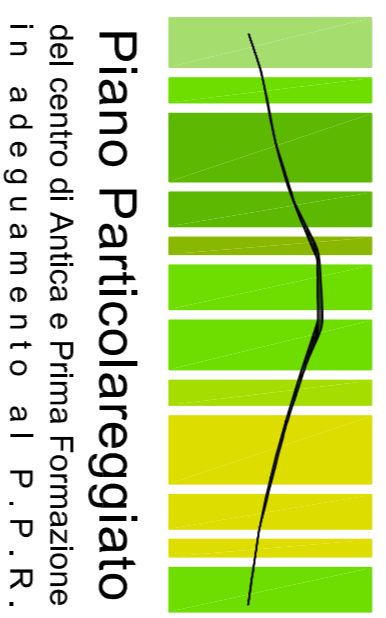


# LEGENDA

- Viabilità principale
- Piazza
- Slargo



**COMUNE DI GENONI**  
PROVINCIA DI ORISTANO

**IL SINDACO**  
Sig. Roberto Soddu

**IL RESPONSABILE DEL SERVIZIO**  
Arch. J. Pierro Porru

**PROGETTISTI COORDINATORI**  
Dot. Ing. Giulia Bagnolo  
Dot. Ing. Antonella Saba  
Dot. Arch. Francesca Piccolau

**COPROGETTISTI**  
Dot. Ing. Alessio Azzioli  
Dot. Ing. Maria Elena Piras

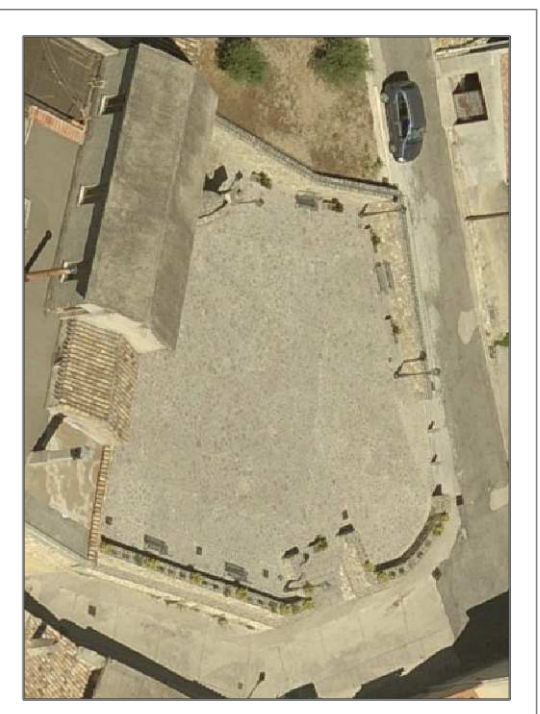
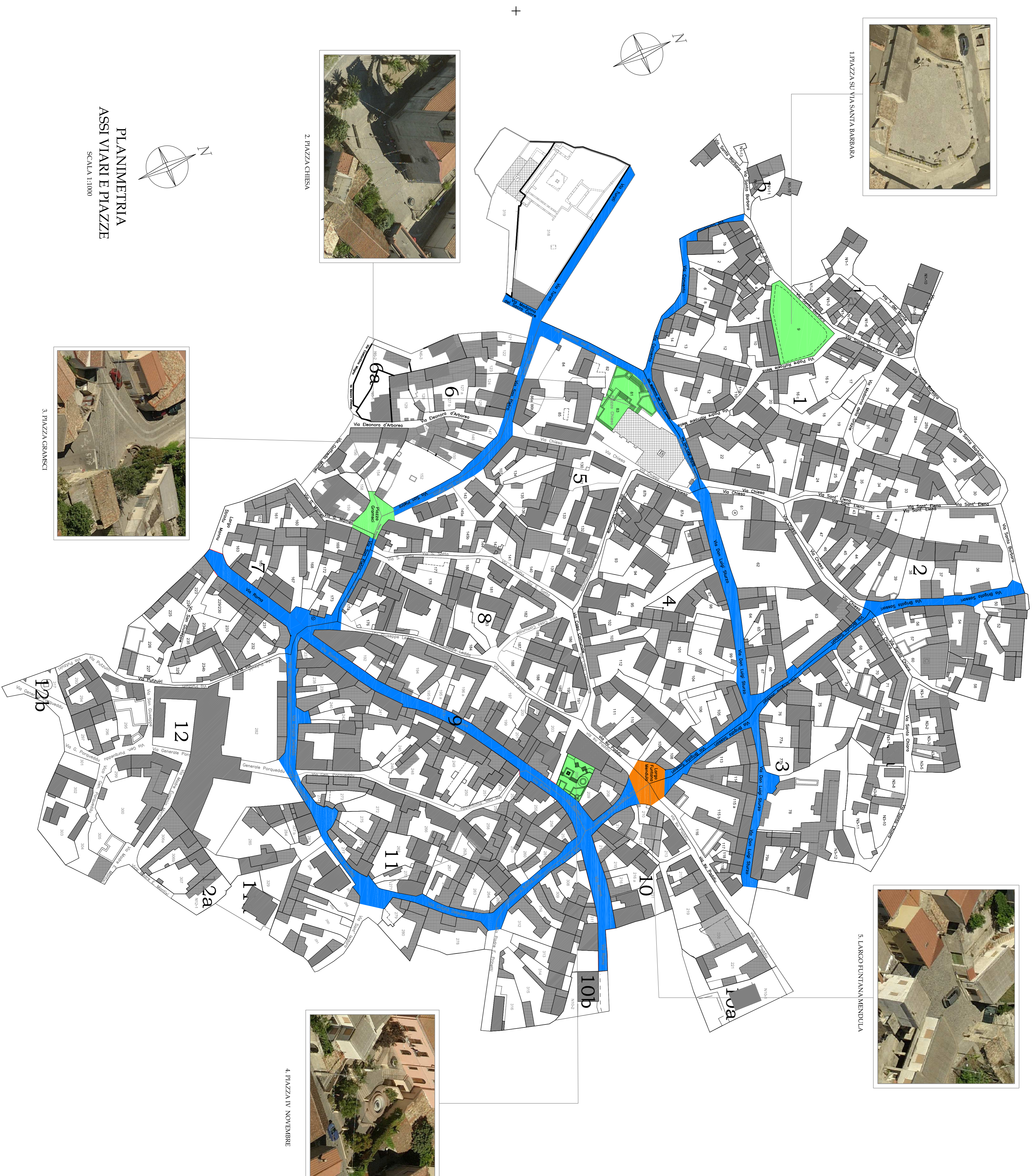
**GRAFICHE E RENDER**  
Designer Simone Cardia  
Designer Paola Saba

**PLANIMETRIA DEL CENTRO STORICO**  
ASSI VIARI E PIAZZE

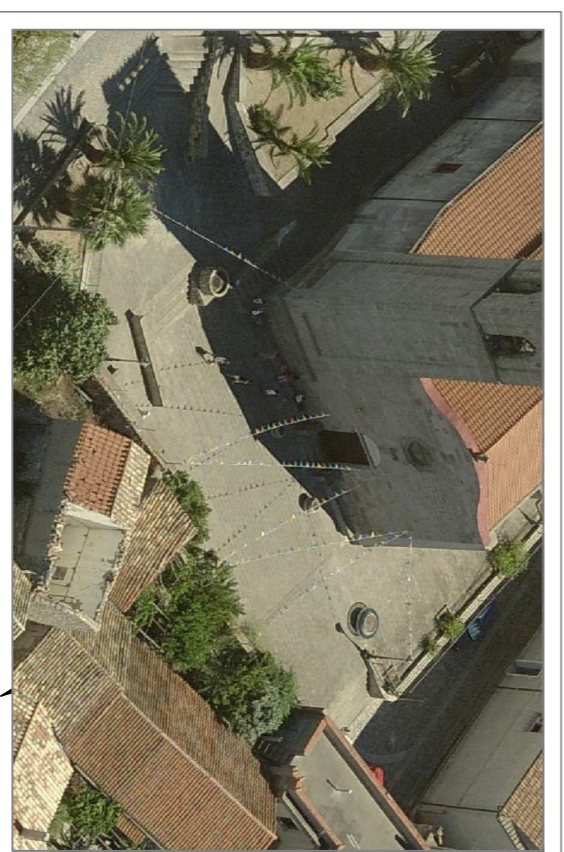
SCALA 1:1000

TAVOLA N.

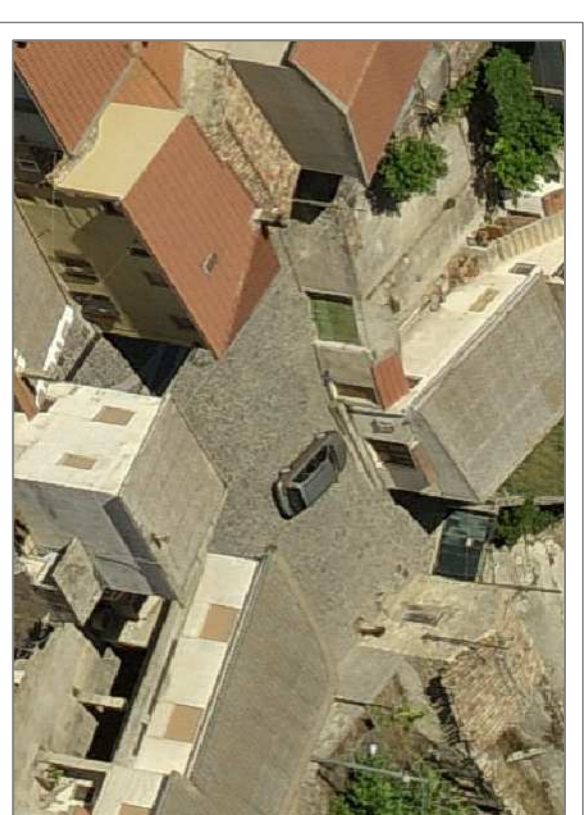
**H**



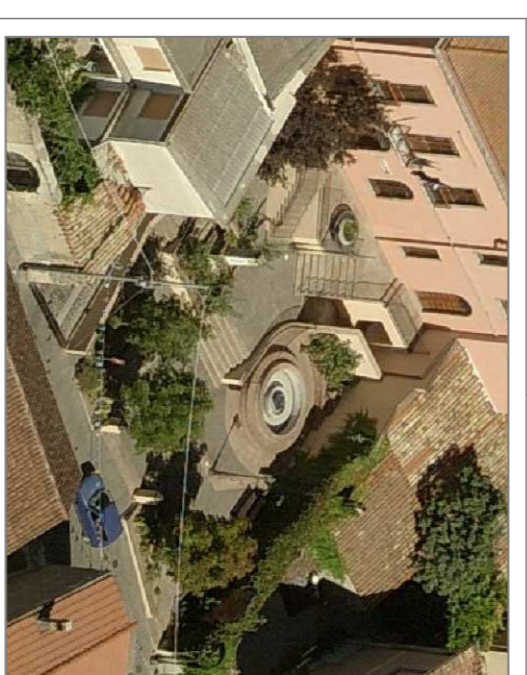
1. PIAZZA SU VIA SANTA BARBARA



2. PIAZZA CHIESA



5. LARGO FONTANA MENDULA



4. PIAZZA IV NOVEMBRE



3. PIAZZA GRAMSCI

**PLANIMETRIA**  
ASSI VIARI E PIAZZE

SCALA 1:1000

